

MIN. 26 GA. TUFF RIB ROOF PANEL LOAD TABLE OVER OPEN FRAMING

DIXIELAND
METALS OF
ALABAMA, LLC.

Buildings having a Roof Mean Height $\leq 20'-0"$; Roof Slope: $2\frac{1}{2}"/12"$ - $6\frac{1}{2}"/12"$ Gable or Hip Roof
Wind Speeds 130-160 mph, Exp C, Risk Category II, Enclosed Bldg. based on FLORIDA BUILDING CODE 2010

| MIN. 26 GA. TUFF RIB PANEL FASTENER SPACING | | | | | | |
|---|----------|-------------------|----------------------|----------------------|----------------------|----------------------|
| ZONE | FASTENER | SUBSTRATE | WIND SPEED ZONE | | | |
| | | | 130 | 140 | 150 | 160 |
| | | | ON CENTER SPACING | ON CENTER SPACING | ON CENTER SPACING | ON CENTER SPACING |
| ZONE 1 | #12-14 | 16 GA. FRAMING | 24" | 24" | 24" | 24" |
| ZONE 2 | #12-14 | 16 GA. FRAMING | 24" | 24" | 24" | 24" |
| ZONE 3 | #12-14 | 16 GA. FRAMING | 24" | 24" | 24" | 24" |

PANEL DESCRIPTION: MIN. 26 GA. GRADE 80, 36" COVERAGE, 3/4" TALL.

PANEL ROLLFORMER: MRS, METAL ROLLFORMING SYSTEMS.

PANEL FASTENER: (1) #12-14 HWH SELF DRILLER W/ SEALING WASHER.

MAXIMUM ALLOWABLE PANEL UPLIFT PRESSURE: 96.8 PSF @ 24" FASTENER SPACING BASED ON TAS 125, UL 580/UL 1897 TESTING.

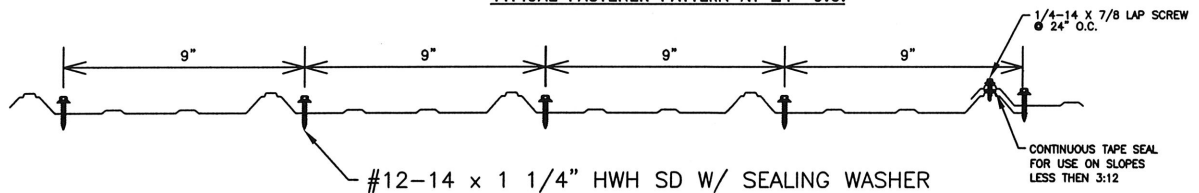
SUBSTRATE: MIN. 16 GA. STEEL FRAMING. STEEL FRAMING MUST BE DESIGNED IN ACCORDANCE WITH FBC 2010.

ROOF SLOPE: ON ROOF SLOPES LESS THAN 3:12, LAP SEALANT MUST BE USED IN PANEL SIDE LAPS.

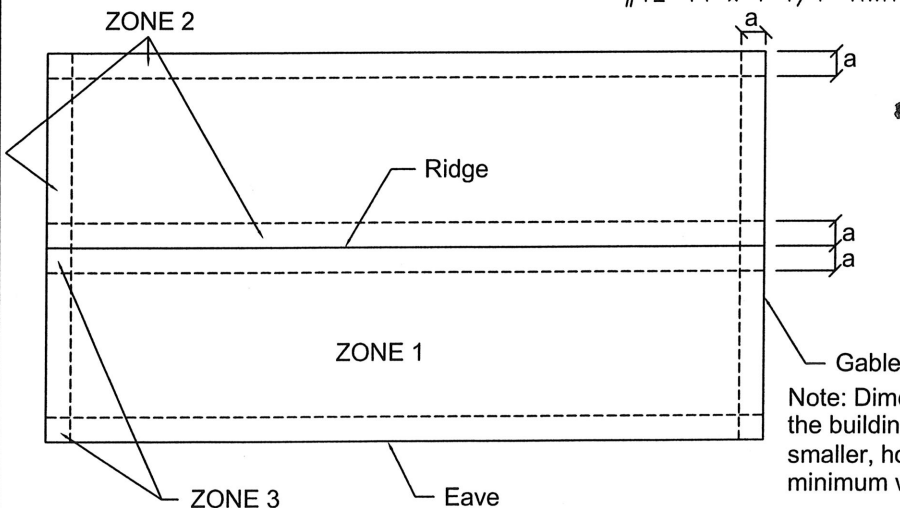
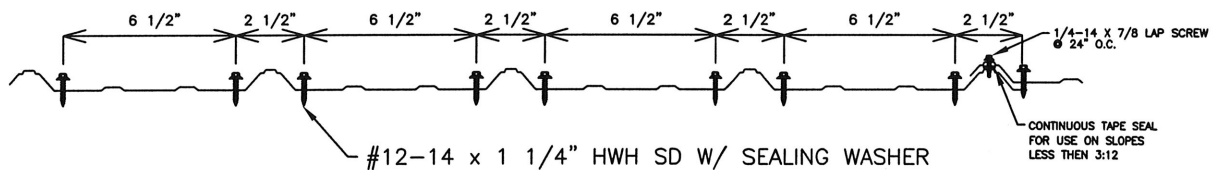
LOAD TABLE BASED ON WIND PRESSURES CALCULATED PER ASCE 7-10 ($K_d=0.85$) MULTIPLIED BY 0.6 PER FBC 2010, SECTION 1609.1.5.

LOAD TABLE DOES NOT INCLUDE OVERHANG ZONES

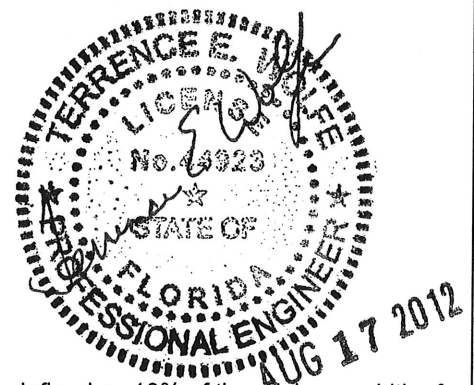
TYPICAL FASTENER PATTERN AT 24" O.C.



FASTENER PATTERN AT PANEL ENDS



State of Florida
C.O.A.
28776



Note: Dimension (a) is defined as 10% of the minimum width of the building or 40% of the mean height of the roof, whichever is smaller, however, (a) cannot be less than either 4% of the minimum width of the building or 3 feet.